

## Digestive System

Chapter 15, pages 326 ff

1. Digestive System Essential Functions (Page 327)
  
2. Digestive Subdivisions (Page 327; also Page 328. Fig 15.1)
  - A. Mechanical Digestion
  - B. Chemical Digestion
    - i. Enzymes (Pull out handout on Enzymes)
  
3. Tissue Layers (Pages 327 - 329)
  - A. Mucous Membrane
  
  - B. Submucosa
  
  - C. Muscle Layer
  
  - D. Connective Tissue and Serous Membrane

4. Major Subdivision of the Digestive Tract

A. Mouth (Pages 330 - 332)

i. Palate (Page 417)

a. Hard Palate

b. Soft Palate

ii. Tongue (Page 330)

iii. Dentition (Pages 330 - 332)

a. Deciduous Teeth

- Incisors: 4
- Cuspids: 2
- Molars: 4

b. Permanent Teeth (Page 331; Figure 15.5)

- Incisors: 4
- Cuspids: 2
- Premolars: 4
- Molars: 6

iv. Tooth Anatomy (Pages 331 - 332; See Figure 15.6)

a. Crown

- Enamel

b. Root

c. Dentine

d. Pulp Cavity

v. Salivary Glands (Page 332 - 333)

- Saliva

a. Functions

b. Glands

- Parotid Glands
- Submandibular Glands
- Sublingual Glands

B. Pharynx (Page 333)

i. Epiglottis

C. Esophagus (Pages 333 - 334)

i. Lower Esophageal Sphincter

- D. Stomach (Pages 334 - 336)
  - i. Lower Esophageal Sphincter
  
  - ii. Pyloric Sphincter
  
  - iii. Chyme (Page 335)
  
  - iv. Function of Stomach
    - a. Acid
  
    - b. Pepsin -> Pepsinogen
  
- E. Small Intestine (Pages 340 - 343)
  - i. Regions
    - a. Duodenum
  
    - b. Jejunum
  
    - c. Ileum
      - Iliocecal Sphincter

## Human Body in Health and Disease Student Outline – Digestive System

- ii. Structures
  - a. Villi
  - b. Microvilli
  
- iii. Functions of Small Intestine

### F. Large Intestine (344 - 345)

- i. Anatomy
  - a. Cecum
    - Ileocecal Valve (Sphincter)
  - b. Ascending Colon
  - c. Transverse Colon
  - d. Descending Colon
  - e. Sigmoid Colon
  
- ii. Functions
  - a. Water absorption
  
  - b. Synthesis Function

G. Liver (Page 338 - 340)

i. Structure

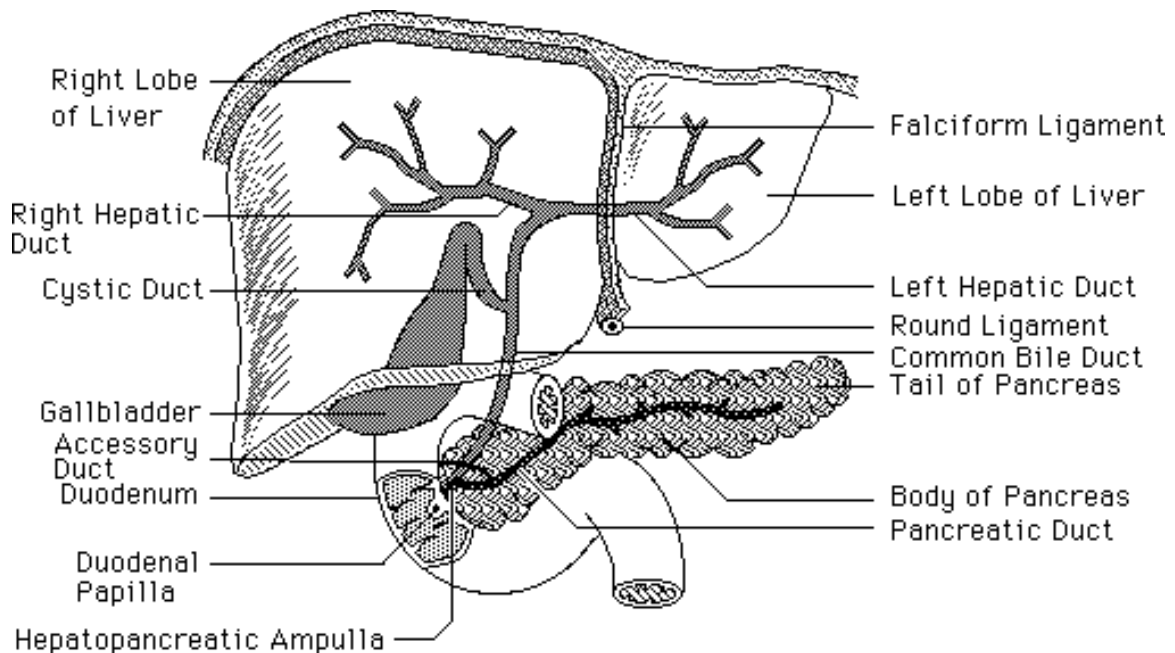
a. Lobules

ii. Vasculature (Review Hepatic Portal System)

a. Hepatic Portal Vein

b. Hepatic Artery

iii. Functions



H. Gall Bladder (Page 340)

i. Function

a. Bile

b. Emulsification

I. Pancreas (Pages 336 - 337)

i. Pancreatic Duct and Common Bile Duct

iii. Pancreatic Enzymes (Page 337)

Do these on your own:

5. Disorders (Pages 350 - 351)
  - A. Diverticulitis and Diverticulosis
  - B. Hepatitis
  - C. Periodontal Disease
  - D. Peritonitis
  - E. Diarrhea
  - F. Eating Disorders
    - i. Anorexia Nervosa
    - ii. Bulimia
  - G. Gall Stones