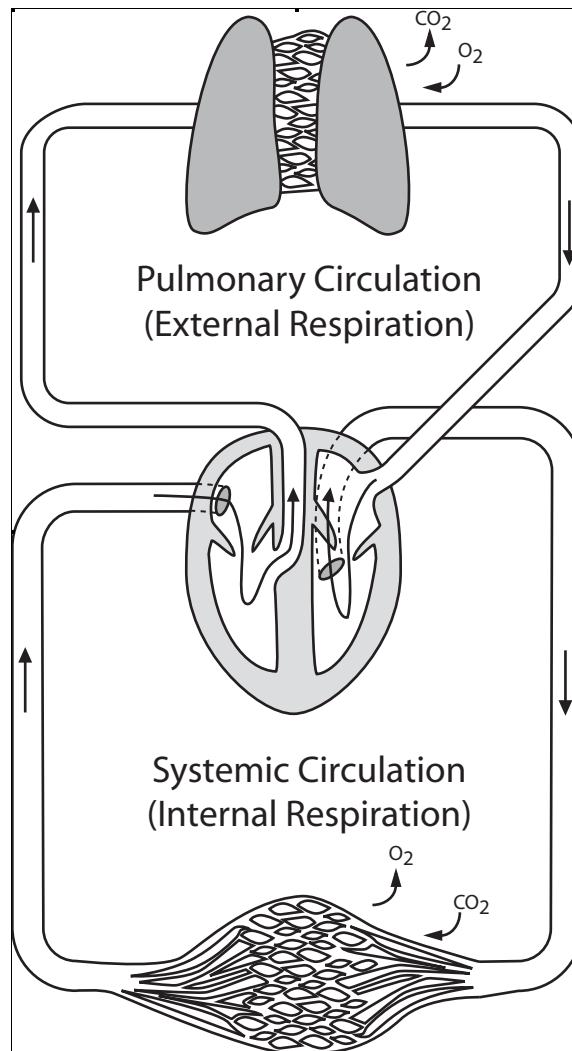


Respiratory System

Chapter 14, pages 308 ff

1. Review of Circulatory Routes and Basic Functions



2. Essential Functions (Page 309)

3. Organs of the Respiratory System

A. Nose (Pages 309 -311)

i. Chonchae (see figure 14.1)

ii. Paranasal Sinuses (Page 310)

iii. Pseudostratified Ciliated Columnar Epi. (Page 309 - 310; figure 14.1)

B. Pharynx (Pages 311)

i. Tonsils

a. Palatine Tonsil

b. Pharyngeal Tonsil (Adenoids)

c. Lingual Tonsil

ii. Eustachian Tubes

C. Larynx (Pages 311 - 312; See also Page 311, Figure 14.2 & 14.3)

i. Structures

a. Cartilages

ii. Vocal Folds

iii. Epiglottis

a. Glottis

iv. Swallowing

D. Trachea (Pages 312)

i. Cartilage Rings

ii. Mucous and Cilia

E. Bronchi (Page 312)

i. Bronchial Tree

- a. Primary Bronchi
- b. Secondary Bronchi
- c. Bronchioles
- d. Alveoli (Pages 312 - 314)
 - Surfactant (Page 312)

F. Lungs (Pages 313)

i. Pleural Cavity (Page 313)

- a. Visceral Pleura
- b. Parietal Pleura

3. Ventilation (Breathing) (Pages 315 - 316)

A. Basic Processes

i. Inspiration (inhalation)

a. Diaphragm

b. External Intercostals

ii. Expiration (exhalation)

a. Passive Expiration

b. Active Expiration

- Abdominal Muscles

- Internal Intercostals

4. Control of Ventilation (Pages 318 - 319)

A. Respiratory Centers

i. Acid and CO₂

ii. Chemoreceptors

a. Carotid bodies

b. Aortic Bodies

Do this on your own:

5. Disorders of the Respiratory System (Pages 322 - 323)

A. Chronic Obstructive Pulmonary Disease (COPD)

B. Bronchitis

C. Emphysema

D. Asthma

E. Influenza

F. Laryngitis

G. Pneumonia