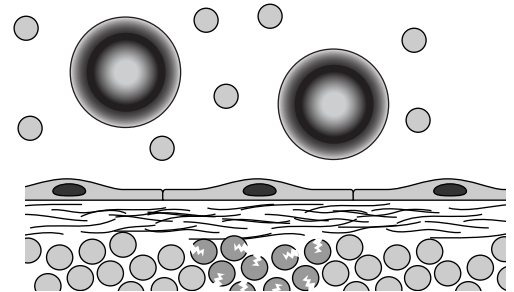
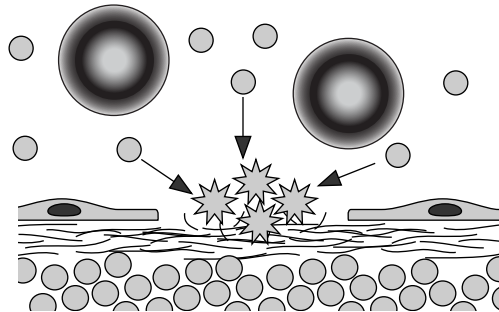
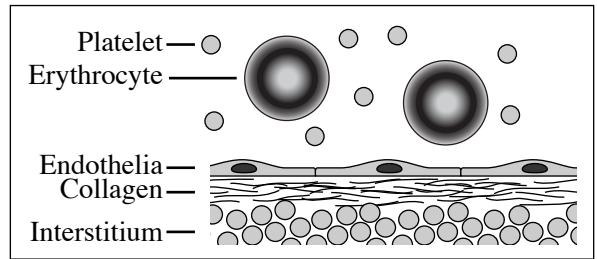


Hemostasis

Platelet Plug - Exposed collagen due to endothelia damage allows for platelet adhesion, enlargement, and aggregation. Platelets soon release serotonin and clotting factors.



Platelet released clotting factors initiate a complex cascade of reactions culminating in Factor X activation and the therefore the "common pathway"

Intrinsic Pathway

Synergist operation of both pathways results in both a quick and prolonged response that will efficiently stop blood flow in almost all cases.

Extrinsic Pathway

Damaged tissues release "tissue factor", which bypasses several reactions of the Intrinsic pathway prompting quick activation of the common pathway.

Common Pathway leads to polymerization of Fibrinogen into fibrin fibers. These fibrin fibers will be cross linked to form a secure adhesive mesh that can effectively stop bleeding.

